

MT RUNDLE FREE PATTERN | OCT 2023

SATIN STITCH

#EMBROIDERYVSANXIETY | BY VIKASSPACE

INSIDE THIS PATTERN

SUPPLIES CHECK LIST

INSIDER TIPS ON SATIN
STITCH EMBROIDERY

COLOUR PALETTE AND
TRANSFER TEMPLATES





SUPPLIES CHECKLIST

1 EMBROIDERY HOOP

My favourite embroidery hoops are made by [Nurge](#)

2 EMBROIDERY FLOSS

I personally use [DMC floss](#), it has a good track record for quality

3 EMBROIDERY NEEDLE

I recommend [Milliners Needles](#) for satin stitch

4 EMBROIDERY FABRIC

There are [a few different kinds](#) I absolutely love!

5 EMBROIDERY SCISSORS

*The smaller the better!
You can find my favourite little snips [here](#)*

6 NEEDLE MINDER

A home base for your needle, every stitcher should have at least [one of these](#) little guys

7 HEAT ERASE PEN

Pilot FriXion Pens are excellent! And the best part? You can probably find some in your local stationary shop

8 IRON / HAIRDRYER

You will need some heat to remove the left over inks



My thread of choice for this little guy was DMC Mouline Stranded Cotton, single strand.
Stitched on Premium Calico Cotton.



SATIN STITCH TUTORIAL

Most of my embroidery is centred around just one stitch – SATIN STITCH.

It's an extremely simple stitch, yet many find it quite difficult to tackle. Please watch a short [video tutorial](#) on how to do satin stitch properly, and check out my other video embroidery tips for more information on satin stitch and how to make it look neat!

Here are a few tips to get you started:

1 NEEDLE SIZE

Make sure your needle is just the perfect size. If threading it is easy, it's a good choice but if you struggle, choose a bigger size

2 THREAD LENGTH

Use about 10-12" of thread at a time, however this isn't a rule! It's easier to stitch with shorter thread

3 DIRECTION

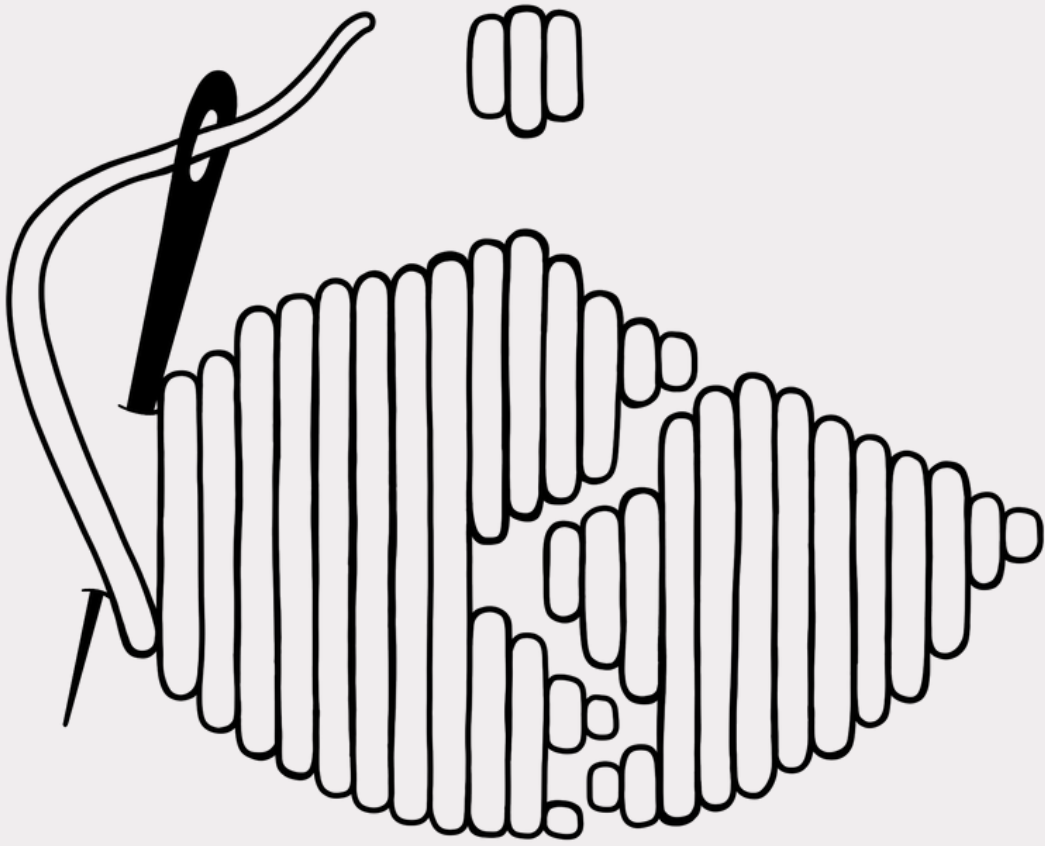
Stitch in the same direction, always (applies to satin stitch only)

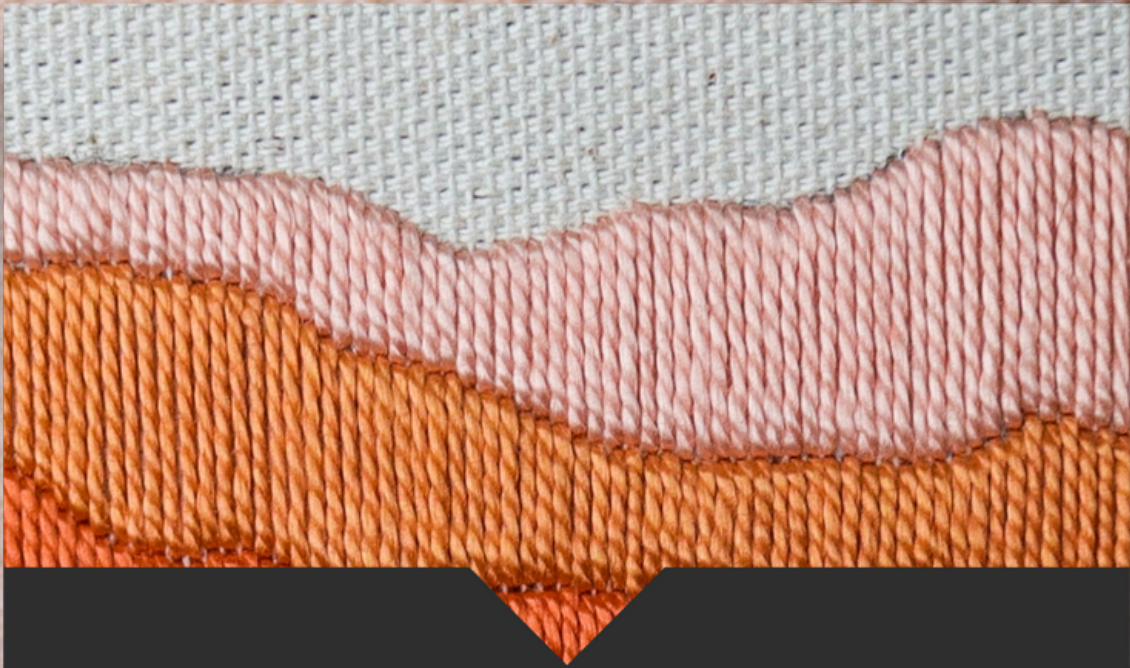
4 TIMING

Don't speed through the process, it is a chill craft after all

5 TAKE REST

Take lots of breaks to rest your hands and eyes, repetitiveness is a good thing, but in moderation

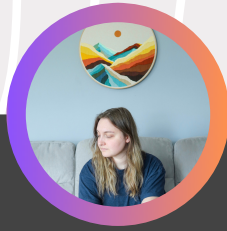




FOLLOW THE WEAVE

The easiest and surprisingly effective way to lay your satin stitches nice and straight right next to each other is to follow the weave of the fabric.

You just have to make sure to stretch your fabric carefully in the hoop to have those weaves straight



Follow me on Instagram to see
what I'm up to every day!

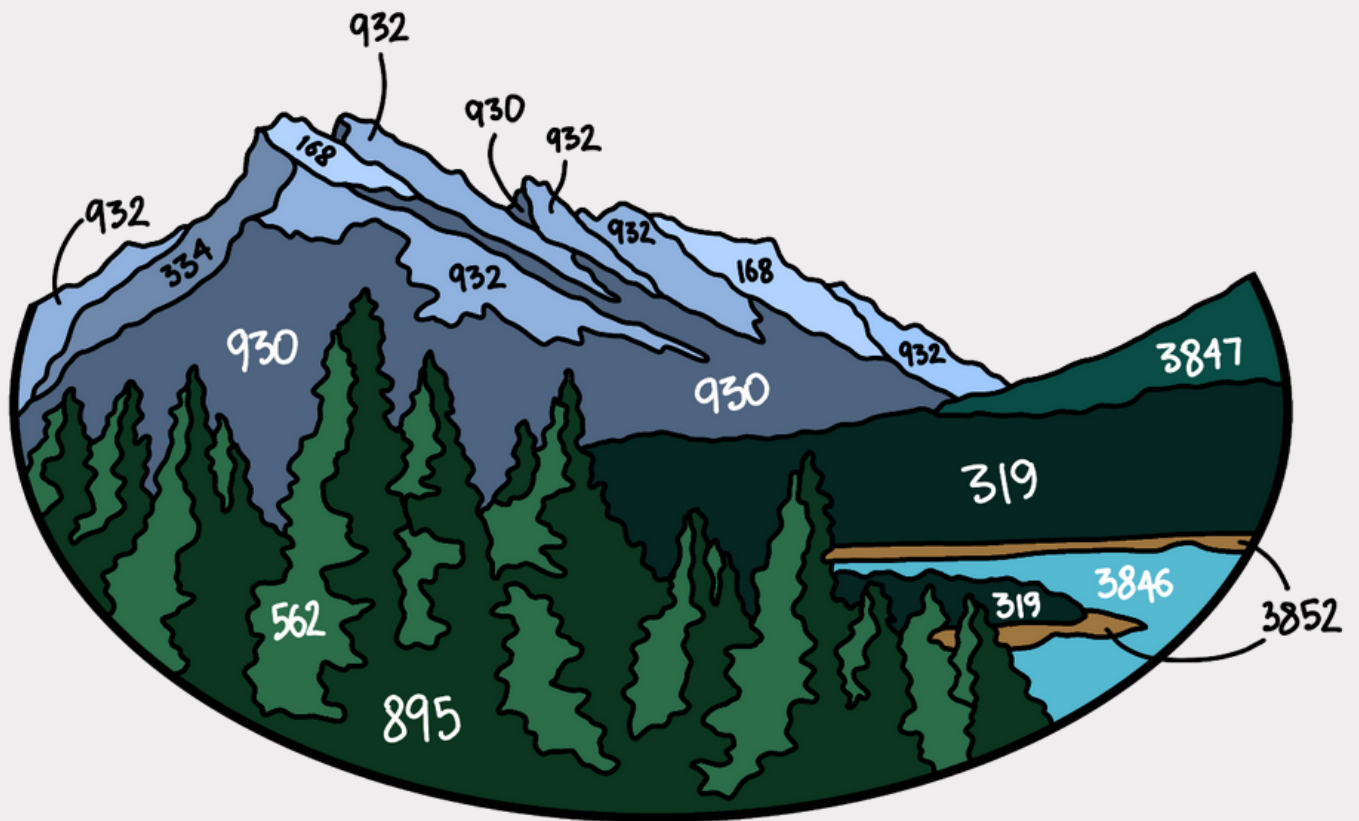


This zine is available as PDF or as a printed copy & a Nurge 5" hoop bundle and consists of my best efforts to showcase my best satin stitch tips and more



This is the original mockup I used. The digital colours will differ quite a bit from the embroidery thread colours, this is by design. After all, there is only 500 embroidery thread colours to choose from.

Either way, do what you have to do to make your version yours.



- 1 - 168
- 2 - 932
- 3 - 334
- 4 - 930
- 5 - 3847
- 6 - 319
- 7 - 895
- 8 - 562
- 9 - 3849
- 10 - 3852

*I made this design in a very small hoop made by [@hoopsnmore](#).
This is the colour palette I used. All threads were DMC Mouline
Stranded Cotton.*

*Have fun with it!
And sign up for my mailing list to get notified when I make more free
embroidery patterns [here!](#)*

*Thanks,
Vika*

